

# 63-P600



## BOURDON TUBE PRESSURE GAUGES

MODEL P600 DN 63

### CASE DIAMETER

63 mm

### ACCURACY CLASS PER EN 837-1/6

1.6

### SCALE RANGES PER EN 837-1/5

0...1 to 0...1000 bar or equivalent other units of pressure or vacuum

### WORKING PRESSURE

Continuous service up to maximum rating  
Intermittent service up to 1,3 times maximum rating for ranges up to 60 bar; up to 1,15 times for ranges over 100 bar  
Fluctuating up to 90% of maximum rating only

### OPERATING TEMPERATURE

Ambient :  
-40 / +65 °C  
Process fluid :  
100 °C max

### TEMPERATURE ERROR

When temperature of the pressure element deviates from +20 °C:  
Rising temperature: + 0,4% / 10 °C of true scale value  
Falling temperature: - 0,4% / 10 °C of true scale value

### STANDARD FEATURES

### PROCESS CONNECTION

Material: stainless steel AISI 316  
Thread size: 1/4" BSP or NPT - M  
Lower or back

### PRESSURE ELEMENT

AISI 316 L stainless steel  
-1 to 60 bar : C - type  
100 to 1000 bar : Helical type

### MOVEMENT

Stainless steel AISI 304

### DIAL

Aluminium with black markings on white background, dial arc 270 °C

### POINTER

Black aluminium pointer

### CASE AND RING

AISI 304 stainless steel  
Bayonet ring style  
Protection class:  
IP 65 - EN 60 529 / IEC 529

### WINDOW

Plexiglas

### GASKET

Neoprene rubber

### MOUNTING

Stem mounting  
Panel mounting with front flange or U-clamp connection  
Surface mounting with black flange

### OPTIONAL EXTRAS

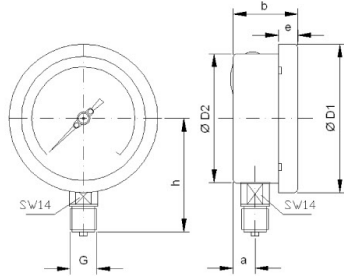
Other process connection  
Case and ring material stainless steel AISI 316  
Case and ring crimped  
Glycerine filled case (+ 15 to + 65 °C)  
Silicon oil filled case (- 45 to + 100 °C)  
Other liquids such as compatible with food processes or for oxygen service (Galden - Perfluorinated polyethers) are available upon request  
Safety glass or Plainglass  
Diaphragm seals (see DS data sheet)  
Oxygen service  
Maximum reading pointer



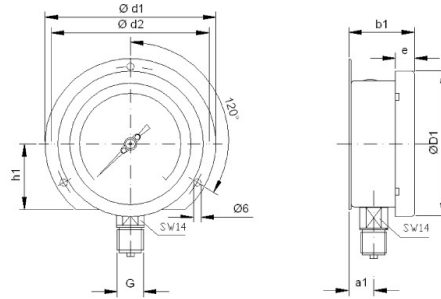
Calle Pirita 12450 Galpón 22

La Chimba Alto Antofagasta - Fono (55) 261 8313

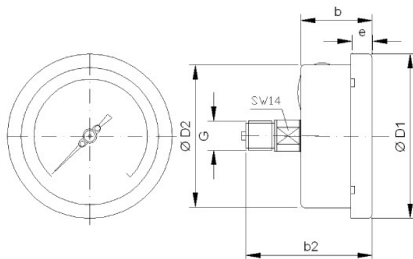
# 63-P600



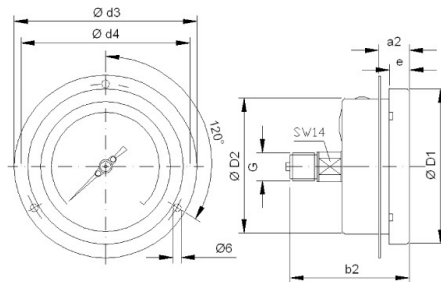
LOWER CONNECTION



BACK FLANGE



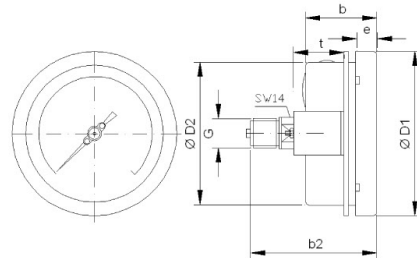
BACK CONNECTION



FRONT FLANGE

DN	DIMENSIONS mm							
	a	a1	a2	b	b1	b2	D1	D2
63	8	10.5	12	30	32.5	59	69	61.5
	d1	d2	d3	d4	e	G*	h	h1
	85.5	72	85	74	9.5	1/4"	57	34.5

\*BSP or NPT



U-CLAMP CONNECTION

## HOW TO ORDER

- NOMINAL SIZE**    **63**
- BASIC MODEL**    **P600**
- GAUGE CONNECTION**

1 1/4" BSPT-M	2 1/4" NPT-M	3 1/4" BSP-M
4 1/8" BSPT-M	5 1/8" NPT-M	6 1/8" BSP-M
- TYPE OF MOUNTING**
  - L** DIRECT BOTTOM ENTRY    **R** DIRECT CENTER BACK ENTRY
  - LF** SURFACE/WALL MOUNTING WITH BOTTOM ENTRY
  - RF** FLUSH PANEL FRONT FLANGE WITH BACK ENTRY
  - RB** CENTRE BACK ENTRY WITH MOUNTING BRACKET (U-CLAMP)
- SCALE RANGE**    0...1 to 0...1000 bar    (or equivalent other units of pressure or vacuum)
- OPTION**
  - CS** AISI 316 CASE & RING (minimum quantity required)    **OS** OXYGEN SERVICE
  - SF** SAFETY GLASS WINDOW    **SJ** MAXIMUM READING POINTER    **SX** STAINLESS STEEL TAG PLATE
  - SW** DIAL TAG MARKING    **RH** CUSTOMER DESIGNED DIAL
  - PF** DAMPENING LIQUID FLUOROLUBE FILLED    **PG** DAMPENING LIQUID GLYCERINE FILLED
  - PZ** DAMPENING LIQUID SILICON FILLED
  - DIAPHRAGM SEAL (codes and description on data sheet "electric seals")

EXAMPLE	1	2	3	4	5	6
	63	P600	2	LF	6 bar	SF - PG

ED. 08/2012 In the interest of technical progress ITEC reserve the right to modify, without prior notice, the specifications and material mentioned