

# 63P20



## CAPSULE PRESSURE GAUGES

### SERVICE INTENDED

Suitable for dry and gaseous media that will not attack copper alloy parts

### CASE DIAMETER

63 mm

### ACCURACY CLASS PER EN 837-3/6

1,6

### SCALE RANGES PER EN 837-3/5

0...25 to 0...600 mbar  
or equivalent other units of pressure or vacuum

### WORKING PRESSURE

Steady: full scale value  
Fluctuating: 0,9 x full scale value

### OPERATING TEMPERATURE

Ambient: - 20 to 60 °C  
Process fluid: max 65 °C

### TEMPERATURE ERROR

When temperature of the pressure element deviates from +20 °C:  
rising temperature: + 0,3% / 10 °C of true scale value  
falling temperature: - 0,3% / 10 °C of true scale value

### STANDARD FEATURES

### PROCESS CONNECTION

Material: Cu-alloy  
Thread size: 1/4" BSP or NPT - M  
Lower or back

### PRESSURE ELEMENT

Capsule Cu - alloy

### SEALING RING

NBR (Buna rubber)

### MOVEMENT

Cu - alloy

### ZERO ADJUSTMENT

Through dial

### DIAL

Aluminium with black markings  
on white background  
Dial arc 270°

### POINTER

Black aluminium pointer

### CASE

Black finish steel  
Protection class: IP 32

### WINDOW

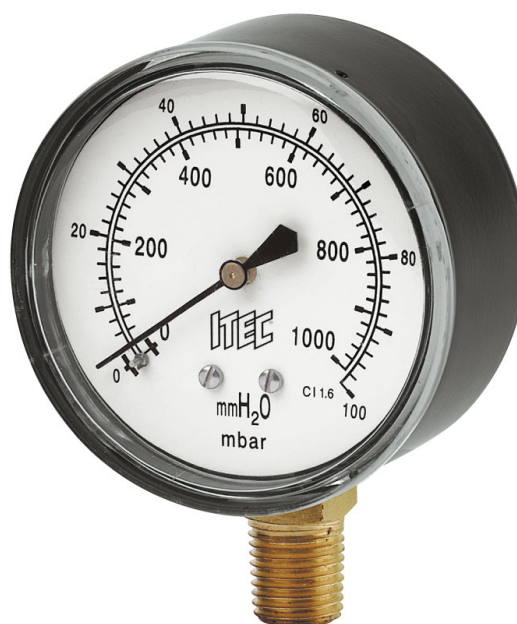
Clear plastic screwed in

### MOUNTING

Stem mounting (bottom or back)  
Panel mounting with front flange

### OPTIONAL EXTRAS

Other threaded process connection  
Stainless steel case  
Oxygen service  
Customer designed dial  
Chromed case  
Nicked socket  
Stainless steel wetted parts  
Stainless steel case

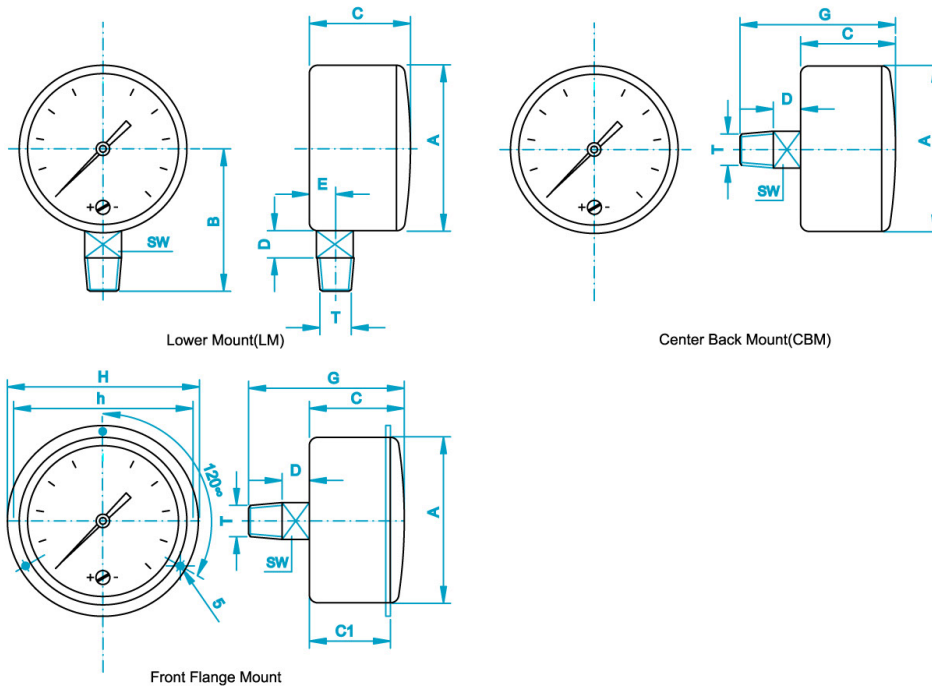


Calle Pirita 12450 Galpón 22  
La Chimba Alto Antofagasta - Fono (55) 261 8313  
[www.promid.cl](http://www.promid.cl)

# 63P20



## CAPSULE PRESSURE GAUGES



Dimensions (mm)

Size	A	B	C	C1	D	E	H	h	G	T*	SW
63	65.6	53.4	39.7	33.5	7	9	88	78	62.5	1/4"	14

\* BSP, NPT

In the interest of technical progress ITEC reserves the right to modify, without prior notice, the specifications and material mentioned.

### HOW TO ORDER

- 1) NOMINAL SIZE**  
**63**
  - 2) BASIC MODEL**  
**P20**
  - 3) GAUGE CONNECTION**  
**1** 1/4" BSPT - M    **2** 1/4" NPT - M    **3** 1/4" BSP - M
  - 4) TYPE OF MOUNTING**  
**L** DIRECT BOTTOM ENTRY    **R** DIRECT CENTRE BACK ENTRY  
**RF** FLUSH PANEL FRONT FLANGE WITH BACK ENTRY (\*1)
  - 5) SCALE RANGE:**  
0...25 to 0...600 mbar                      or equivalent other units of pressure or vacuum
  - 6) OPTIONS**  
**OS** OXYGEN SERVICE    **SX** SS TAG PLATE    **SW** DIAL TAG MARKING  
**RH** CUSTOMER DESIGNED DIAL    **SS** STAINLESS STEEL CASE    **XL** STAINLESS STEEL WETTED PARTS  
**CN** CHROMED CASE    **NS** NICKELED SOCKET
- (\*1) Other process connection available on request

EXAMPLE : 

1	2	3	4	5	6
---	---	---	---	---	---

63	P20	1	R	250 MBAR	SS
----	-----	---	---	----------	----

**Calle Pirita 12450 Galpón 22**  
**La Chimba Alto Antofagasta - Fono (55) 261 8313**  
**www.promid.cl**